


SOLID TO SUCCEED

 **SOLID**
TO SUCCEED

XC7-SR07EV

ELECTRIC SKID STEER LOADER



Operating weight	910 kg
Bucket capacity	0.45m ³
Rated load	16 kW

XC7SR07EV



High Reliability

- LFP battery
- High-strength hydraulic hose
- ROPS&FOPS cab
- Rearview camera (optional)



Comfort and Convenience

- Mechanical suspension damping seat
- Pressurized cab
- Upgraded air-conditioning system
- 7-inch LED touchscreen



High Efficiency

- Extreme fast charging
- Dual electric motors design
- Electronic controlled hydraulic system



Advanced Technology

- Lightweight design
- Improved frame structure
- Lockable at any flow rate



Flexibility and Versatility

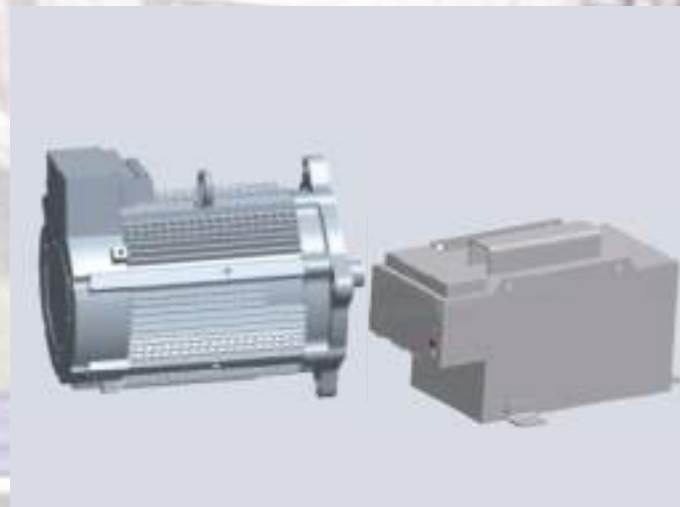
- Multiple attachment choice
- Powerful hydraulic power source for implements
- Customized equipment service



Easy Maintenance

- One-stop maintenance
- Adequate service space

HIGH EFFICIENCY



- CE-certified LFP battery with high energy density; quality guaranteed.
- Large-capacity battery for long service life.
- Extreme fast charging, 0%-100% in just 2.2h.

- Traveling system adopts the dual motor design, permanent magnet synchronous motor with reductor to achieve the best power output.
- The permanent magnet synchronous motor provides high power and torque density, strong overload capacity, and excellent efficiency while saving energy.
- Reductor integrated brake design offers excellent braking performance.



- The hydraulic system utilizes an electric control mode that ensures quick and accurate responses to each operation, effectively enhancing working efficiency.
- The auxiliary flow output can be adjusted proportionally and without stage limitation, allowing it to be locked at any flow rate.

- Dual handle operation allows users to select between ISO/H modes, making it easier for operators to adapt quickly based on regional preferences.



SAFETY AND COMFORT



- LFP batteries offer enhanced safety due to their material characteristics and can function reliably in various environments, providing loaders with reliable energy support.
- BMS nine security protection ensures the stable operation of the equipment.



- The CAE-optimized frame structures effectively enhance the robustness of critical bearing components and demonstrate exceptional performance under torsion and impact loads in various conditions.
- Lightweight design of the working device and higher load capacity of the lifting arm.
- ROPS&FOPS cab is sturdy and stable, ensuring operating safety when subjected to severe impacts.



- The spacious interior cab features mechanically suspended damping seats that offer multiple adjustment angles for high comfort.
- Optimized internal air duct design enhances air conditioning performance by balancing airflow and maintaining stable temperature control, featuring glass defrost and foot-warming functions.



- 7-inch LED screen with optional rearview camera.
- All instruments are well-organized and easy to operate, enhancing work efficiency.
- Panoramic cab provides a wider view and facilitates easier work.



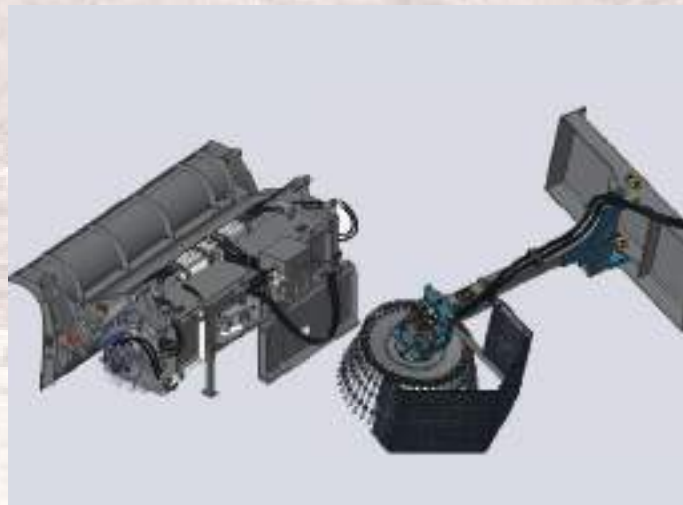
FLEXIBILITY AND VERSATILITY



- An electric drive system with low noise and zero emissions makes the loader ideal for municipal construction, animal husbandry and various working conditions.
- Independent control of the left and right wheels allows for in-situ steering, making the loader optimal for narrow spaces.



- The hydraulic system features flow rate proportional control, allowing for precise and flexible operation.
- More accurate motor control and faster motor response compared to fuel vehicles.
- Radial lifting working device.



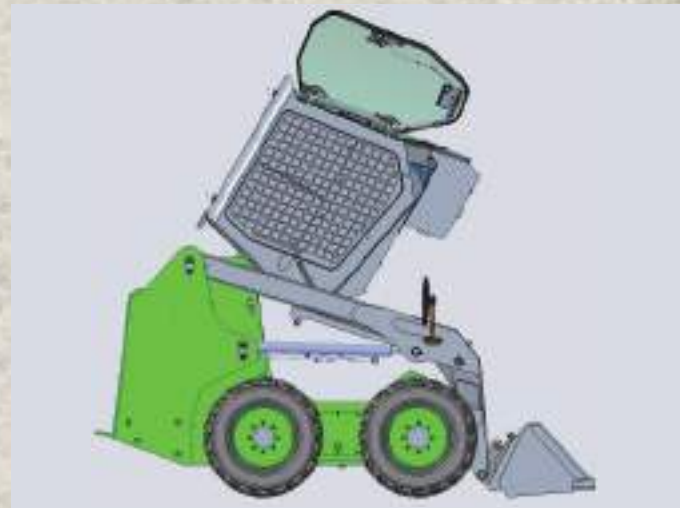
- Standard auxiliary pipes are designed for multi-purpose machines, providing more available options.
- Stronger hydraulic power source for better performance.



- Adaptation of different standard quick coupler devices that provide flexible equipment choices and allow for on-demand replacements.
- Multiple equipment options and available customized equipment services.



EASY MAINTENANCE



- The motor and sprocket case are maintenance-free, making operation simple and cost-effective.
- Maintenance points, including oil level checking, oil refilling and grease filling, are positioned in easily accessible areas.
- With a large-angle back-flip design, the upper cover of the rear hood can be fully opened, allowing for one-stop maintenance of the main components.



- Each articulated pin adopts high-intensity pins to enhance the service life of structural components.
- The main wearable parts of the bucket are made of high-intensity wear-resistant plates with reliable structure.
- Remote malfunction diagnosis, enhancing maintenance efficiency.
- Remote update program and real-time monitoring of overall status.
- Global coverage of marketing and service outlets ensures exceptional support.



MAIN SPECIFICATIONS

Overall Parameter

Type	Parameter
Operating Weight	3150 kg
Bucket Capacity	0.45 m³
Rated Load	910 kg
Max. Breakout Force	21.5 kN
Tipping Load	1820 kg

EIC System

Overall Voltage	80 V	
Max. Rated Output Power	2×8.5 kW+15 kW	
Max. Output Power	2×15 kW+20 kW	
Max. Rated Output Torque	2×32.5 N·m+71.5 N·m	
Max. Output Torque	2×170 N·m+135 N·m	
Battery Type	LFP Battery	
Battery Capacity	35 kW·h	
Battery Voltage	80 V	
Dc charging Power	16 kW	
Ac charging Power	3.3 kW	
Hydraulic Motor	Amount	1
	Type	Permanent magnet synchronous motor
	Single rated output power	15 kW
	Single max. output power	20 kW
Travel Motor	Amount	2
	Type	Permanent magnet synchronous motor
	Single rated output power	8.5 kW
	Single max. output power	15 kW
Charging Power/Charging Time	16 kW-2.2 h	
	3.3 kW-10.6 h	

The charging time is based on the recommended range of 0%-100%. To prolong the battery's lifespan, please follow the instructions in the operation and maintenance manual for charging.

Driveline

Travel Speed	Forward	0~14 km/h
	Reverse	0~14 km/h
Braking Distance	≤2 m	
Tyre	10-16.5	
Min. Ground Clearance	185 mm	

Cab

Cab	ROPS&FOPS cab is equipped with rear-view mirror, extinguisher, breaker, clothes hook. Adjustable operation device and mechanical damping seat provide comfortable operation.
Heating Power	2 kW
Cooling Power	3.5 kW

Brake

Service Brake	Electrodynamic braking
Parking Brake	Four-wheel full hydraulic wet brake with good heat dissipation ensure safe brake.
Emergency Brake	The emergency stop button inside the cab help stop the engine in an emergency.

Working Hydraulic System

Type	Constant pressure hydraulic system
Pump	Gear pump
Rated Flow	79 L/min
Control Valve	Third function multiway valve
System Pressure	21 MPa
Operating Hydraulic Circuit	Lifting circuit for lifting, holding, lowering and staying movable of the boom Tipping circuit for returning, holding and tipping the bucket
Total Circle Time	≤11 s
Hydraulic Cylinder	Lifting cylinder-2-63×805 mm
	Tipping bucket cylinder-2-63×428 mm

Sound

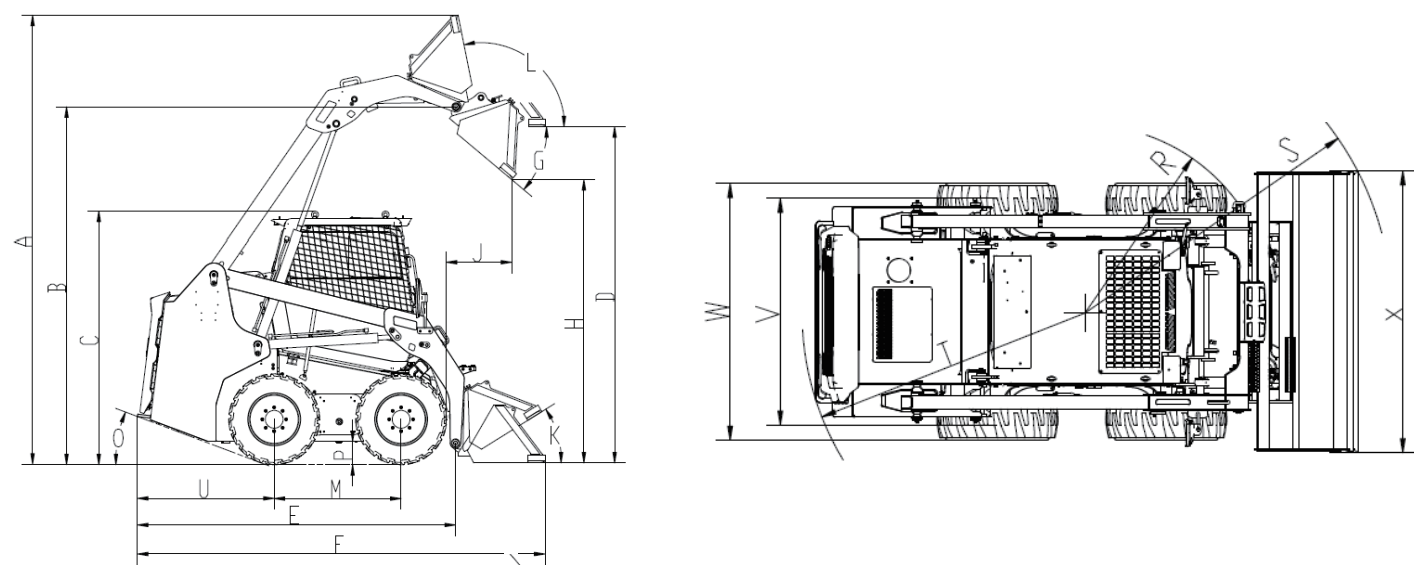
Sound Pressure Level (ISO 6396:2008)	81 dB
Exterior Sound Power Level (ISO 6395:2008)	100 dB
• The guaranteed sound levels described below may vary depending on factors including operating conditions, cooling fan speeds, engine type, and so on. Hearing protection is required if the operator works in an improperly maintained cab or is exposed to noisy environments with open doors or windows.	

Referenced Filling Capacity

*Reference only. Filling volume is based on the actual scale.

Item	Filling Capacity
Hydraulic oil	30 L

MAIN SPECIFICATIONS



	Dimension and Specification	Parameter
A	Max. operating height	3800 mm
B	Height to the hinge pin	3020 mm
C	Height: ground to cab	1960 mm
D	Clearance: level bucket	2865 mm
E	Overall length (without bucket)	2703 mm
F	Overall length	3410 mm
G	Dumping angle	40°
H	Max. dumping height	2400 mm
J	Dumping reach	550 mm
K	Rollback angle: on the ground	32°
L	Rack angle at full lift	101°
M	Wheelbase	1079 mm
O	Departure angle	22°
P	Ground clearance	185 mm
R	Turning radius: over tyres	1212 mm
S	Turning radius: over bucket	1952 mm
T	Turning radius: rear machine	1792 mm
U	Rear length	1162 mm
V	Wheel track	1370 mm
W	Width over tyres	1640 mm
X	Width over bucket	1800 mm

- The technology of XCMG electric skid steer loaders is subject to constant improvement and upgrading. In case the specifications or detailed appearance contained in this brochure differ from actual products, the latter shall prevail.
- XCMG reserves the right of final interpretation for the above. Our products may be modified without prior notice to users.

EQUIPMENT

EIC System and powertrain	STD	OPT
Permanent magnet synchronous motor	●	
LFP battery	●	
Four-wheel drive	●	
Electric motor reducer	●	
Remote battery monitoring	●	
Parking brake	●	
Tubeless tyre	●	
Solid tyre	●	
Deviation compensation	●	
Battery emergency start switch	●	

Hydraulic System	STD	OPT
Bucket auto-leveling	●	
Hydraulic oil cooler	●	
Front auxiliary fuel supply system	●	
Hydraulic quick coupler		●
Staying movable function	●	

Low-Voltage Electric System	STD	OPT
Working hour display	●	
Electrical core temperature display	●	
Battery capacity display	●	
Speed display	●	
Malfunction light/code display	●	
Electric horn	●	
Touch LCD screen	●	
Headlights	●	
2 Front roof working light (LED)	●	
2 Rear roof working light (LED)	●	
2 Signal light on the rear hood (LED)	●	
Rotating warning light	●	

Cab	STD	OPT
ROPS/FOPS cab	●	
Side protective cab screen	●	
Safe restrain bar	●	
Wiper (water spray)	●	
Radio	●	
Suspended seat	●	
Cooling and heating air conditioner	●	
Rearview camera	●	
Back-flip cab auxiliary air spring	●	
Cup hooter	●	

Safety	STD	OPT
Handheld extinguisher	●	
Breaker	●	
Emergency stop switch	●	
Safety interlock system	●	

Other	STD	OPT
Counterweight		●
Anti-corrosion spray		●
Toolkit	●	
Speed control system	●	
ISO/H dual control mode	●	
Rearview mirror	●	

Bucket	STD	OPT
0.45m³ standard bucket	●	
0.45m³ bucket wear plate		●
0.48m³ 4 in 1 bucket		●

Attachment	STD	OPT
Enclosed Broom		●
Auger		●
Breaker		●
Excavator		●
Industrial grapple		●
Forklift		●
Snow blade		●
Deicer		●
Industrial grapple		●
Vibratory compactor		●
Hook		●
Oil drum clamp		●
Clamping plier		●
Grass catcher		●



XCMG loaders offer various attachment choices. Please contact your local dealer for detailed information and the delivery cycle after selection.

OPTIMUM SERVICES XCMG GUARANTEED



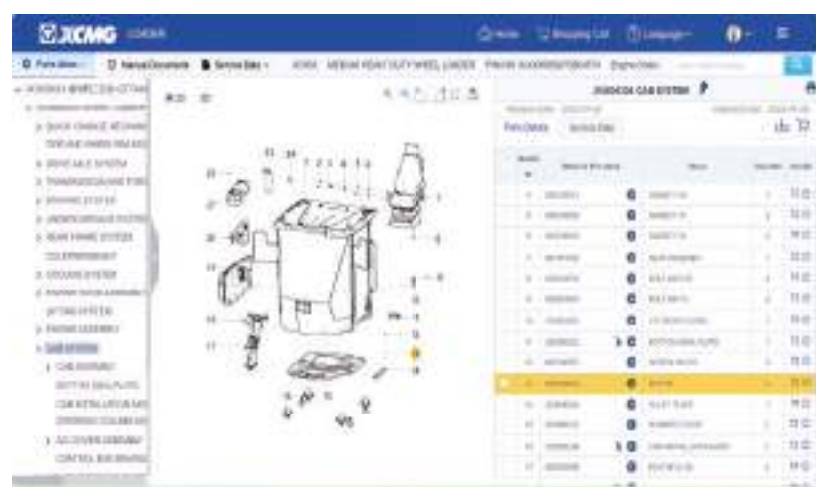
Telematic Information Processing

Remote Diagnosis. GPS terminal system monitors the construction state of the machine and the operating.



Professional Integrated Complete Solutions

XCMG has built a strong reputation based on the quality, reliability and durability of its construction machinery. What's more, XCMG has gradually established a service network to constantly provide its local integrated and highly efficient complete solutions for all customers.



Full Range of Services Ready for you

In order to respond to your needs as fast as possible, XCMG's experts are on their way to your job site from one of our facilities near you. Full range of services are available in order to reduce your total cost of ownership and increase your revenue.



Orchard Construction



Forestry construction



Road Construction



Earthmoving Construction



Gravel Transferring



Municipal Construction



Farm Construction



Building Construction

Introduction

Our Mission and Vision: Empower Solid Future.

Founded in 1943, XCMG is a multinational corporation with the most comprehensive range of competitive, influential products in the construction machinery industry. Our mission is to Empower Solid Future by providing complete sets of engineering equipment and solutions for global customers. It is the enterprise with the most complete categories and complete sets in the world's construction machinery industry. As of now, XCMG has retained its No.1 position in China's construction machinery industry for 35 consecutive years and is ranked NO.3 in the global construction machinery industry. Today, we sell products in over 190 countries and regions worldwide. We drive enterprises to smart, sustainable, and efficient solutions through technological innovation and excellent management solutions.

XCMG Earthmoving Machinery Business Division is a core machinery R&D and manufacturing enterprise under XCMG, specializing in the research and development, manufacturing, and sales services of a full range of loaders from 0.4 to 35 tons, including new energy loaders, skid-steer loaders, and backhoe loaders. It is the first enterprise in China and the third globally to possess the production capacity of loaders with a loading capacity exceeding 35 tons. For 35 consecutive years, it has maintained its position as the top loader exporter in China. XCMG Earthmoving Machinery Business Division has always adhered to the core values of "Responsibility, Virtue, and Fortitude." XCMG perseveres through challenges and forges ahead with determination!

1943

TOP 3

TOP 3 Global Construction Industry

2000

More than 2000 Service Terminals

8500

More than 8500 Valid Patents

40

More than \$4 Billion Annual Exports